

Multihead Indicators



Advanced range of Multihead Indicator units ideally suited to a wide variety of applications such as Loading-Bay Signalling, Shutter Door Status, On-Site Traffic Management, Dockside Signalling and Factory Control.

Standard colour combinations of Red/Green and Red/Amber/Green are shown here. However, all units may be specified with any combination of lens colours from a choice of Red, Amber, Green, Blue and Clear. Colour-sequence, top to bottom, must be specified at time of ordering.

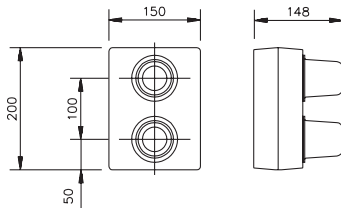
Models MIH are fitted with individual dome hoods to reduce interference by ambient or external light sources. Hoods are supplied configured for traditional vertical mode (one above the other) and are user-configurable for horizontal mode (side by side viewing).

Model MI/1520/2D is suitable for 360° All-around and 270° All-over viewing.

Note:

- 115V AC and 230V AC halogen lamp variants are fitted with a single 55VA transformer (powering maximum two TH20/TH20D lamps or one TH55/TH50D lamp). Extra inbuilt 55VA transformers available to order. Specify +1T for one additional transformer or +2T for two additional transformers.

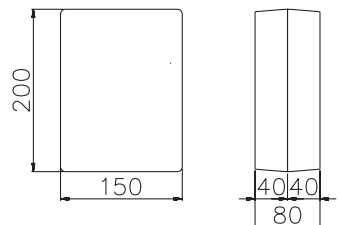
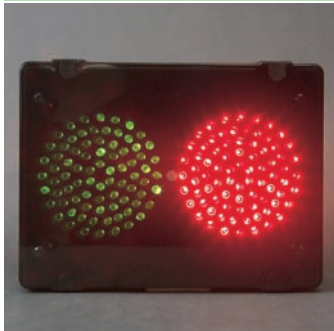
MI/1520/2D



Supply voltage	12V	24V	115V	230V
Supply voltage limits			± 15%	
Supply current: B15D	1A uc	500mA uc	130mA uc	65mA uc
TH20	1.68A uc	840mA uc	175mA ac	88mA ac
Lamp rating B15D	12W		15W	
TH20	20W			
Intensity: B15D	3Cd/5Cd		4Cd/7Cd	
(Red/Green) TH20	7Cd/13Cd			
Environmental limits	-20C, +55C. IP65			

Example Order Code: MI/1520/2D/UC/115/B15D/Red/Amber

IPN/LED/002 - "Traffic Light"



Supply voltage		24Vdc	115Vac	230Vac
Supply current	Red	250mA	60mA	30mA
	Green	250mA	60mA	30mA
Supply tolerance			±15%	
Luminous intensity	Red	180Cd		
	Green	180Cd		
Temperature limits		-40C, +55C		
Environmental protection class		IP65		

Example Order Code: IPN/AC/230/LED/002/Red/Green

For Installation Accessories please refer to page 73

D.G. Controls Limited

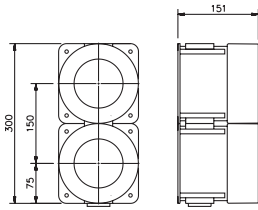
Cadley Hill Road, Swadlincote, Derbyshire, DE11 9TB, ENGLAND.

Tel: +44 (0) 1283 550850 Fax: +44 (0) 1283 550776 E-mail: sales@deegee.com www: http://www.deegee.com

Copyright © Reserved

Multihead Indicators

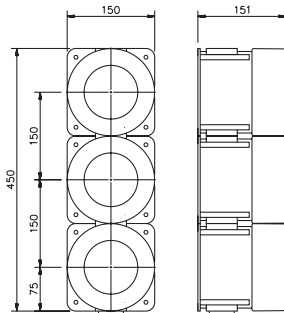
MIH/2U



Supply voltage	12V	24V	115V	230V
Supply voltage limits	± 15%			
Supply current: B15D	1.75A uc	875mA uc	130mA uc	110mA uc
LED	n/a	200mA uc	50mA ac	25mA ac
Lamp rating B15D	21W		15W	25W
LED	n/a	4.8W	6W	6W
Intensity: B15D	188Cd/117Cd		17Cd/7Cd	44Cd/23Cd
(Red/Green) LED	n/a	11Cd/8Cd	11Cd/8Cd	11Cd/8Cd
Environmental limits	-20C, +55C (LED -40C). IP65			

Example Order Code: MIH/2U/UC/24/B15D/Red/Green

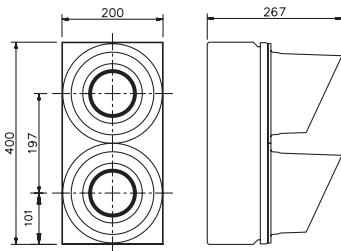
MIH/3U



Supply voltage	12V	24V	115V	230V
Supply voltage limits	± 15%			
Supply current: B15D	1.75A uc	875mA uc	130mA uc	110mA uc
LED	n/a	200mA uc	50mA ac	25mA ac
Lamp rating B15D	21W		15W	25W
LED	n/a	4.8W	6W	6W
Intensity: B15D	188/356/117Cd		17/27/7Cd	44/72/23Cd
(R/A/G) LED	n/a	11/20/8Cd	11/20/8Cd	11/20/8Cd
Environmental limits	-20C, +55C (LED -40C). IP65			

Example Order Code: MIH/3U/AC/230/LED/Red/Amber/Green

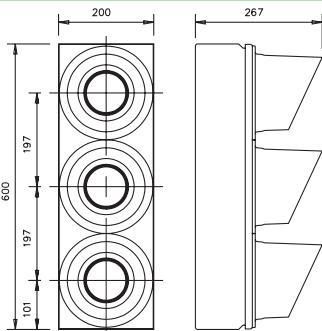
MIH/2040/2L



Supply voltage	12V	24V	115V	230V
Supply voltage limits	± 15%			
Supply current: B15D	1.75A uc	875mA uc	130mA uc	110mA uc
TH20D	1.68A uc	n/a	175mA ac	88mA ac
LED	180mA dc	90mA dc	25mA ac	25mA ac
Lamp rating B15D	21W		15W	25W
TH20D			20W	
LED	2.6W		3W	6W
Intensity: B15D	19Cd/34Cd		11Cd/20Cd	19Cd/34Cd
(Red/Green) TH20D			102Cd/184Cd	
LED			40Cd/20Cd	
Environmental limits	-20C, +55C (LED -40C). IP65			

Example Order Code: MIH/2040/2L/UC/115/B15D/Red/Green

MIH/2060/3L



Supply voltage	12V	24V	115V	230V
Supply voltage limits	± 15%			
Supply current: B15D	1.75A uc	875mA uc	130mA uc	110mA uc
TH20D	1.68A uc	n/a	175mA ac	88mA ac
LED	180mA dc	90mA dc	25mA ac	25mA ac
Lamp rating B15D	21W		15W	25W
TH20D			20W	
LED			n/a	
Intensity: B15D	19Cd/56Cd/34Cd		11Cd/34Cd/20Cd	19Cd/56Cd/34Cd
(R/A/G) TH20D			102Cd/307Cd/184Cd	
LED			40Cd/40Cd/20Cd	
Environmental limits	-20C, +55C (LED -40C). IP65			

Example Order Code: MIH/2060/3L/DC/24/LED/Red/Amber/Green

For Installation Accessories please refer to page 73

D.G. Controls Limited

Cadley Hill Road, Swadlincote, Derbyshire, DE11 9TB, ENGLAND.

Tel: +44 (0) 1283 550850 Fax: +44 (0) 1283 550776 E-mail: sales@deegee.com www: http://www.deegee.com

Copyright © Reserved