

# Telephone Ring Initiated Beacons



Telephone Ring Initiated Flashing Beacon Lamps designed for industrial and community welfare applications where a visual indication of a ringing telephone is required. Applications also include 'Emergency Evacuation' alarm, 'Colour-Coded Personal Telephone' indication for use in factories and where high ambient noise levels persist.

Units can be supplied with or without fitted cables and glands for either plug-in or hard-wired installation.

Available as TPD/LED Light Emitting Diode (LED), TXD Xenon Strobe, TXL Xenon Strobe and TXN Xenon Strobe models.

LED telephone beacons pulse in time with ring signal. Xenon telephone beacons repetitively trigger in time with ring signal.

TPD/LED ultra-low current LED model driven entirely from incoming ring signal, eliminating the need for an external power source.

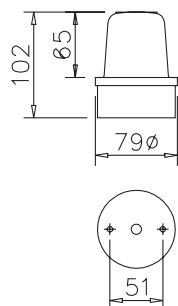
Explosionproof version of TPD/LED (TP/DEX/...) available. Please refer to pages 65 to 67 for details.

Standard Xenon Strobes shown here are designed for connection to a 230Vac power supply. Other supply voltages of Xenon Strobe are available to special order.

All units feature UV-stabilised polycarbonate lenses, available in Red, Amber, Green, Blue and Clear.

Telephone-Initiate option is available for other models on request.

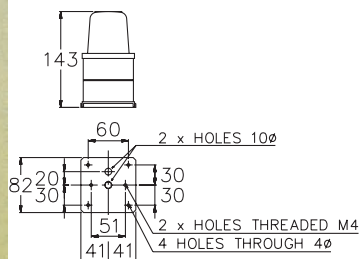
## TPD/LED Light Emitting Diode (LED) - Line Powered



Supply voltage	48 - 75V <sub>ac</sub>
Supply voltage limits	± 15%
Number of LEDs	
Red	30
Amber	30
Green	30
Blue	18
Clear	18
Luminous intensity	8Cd
Temperature limits	-40C, +55C
IEC protection class	IP65

**Example Order Code: TPD/TR/LED/Amber**

## TXD Xenon Strobe



Supply voltage	230Vac
Supply voltage limits	± 15%
Supply current	30mA
Luminous intensity	
Red	8Cd
Amber	24Cd
Green	24Cd
Blue	8Cd
Clear	40Cd
Flash Energy	2.5J
Temperature limits	-40C, +55C
IEC protection class	IP65

**Example Order Code: TXD/AC/230/TRO/Blue**

For Installation Accessories please refer to page 73

**D.G. Controls Limited**

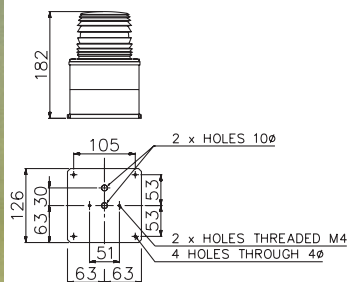
Cadley Hill Road, Swadlincote, Derbyshire, DE11 9TB, ENGLAND.

Tel: +44 (0) 1283 550850 Fax: +44 (0) 1283 550776 E-mail: [sales@deegee.com](mailto:sales@deegee.com) www: <http://www.deegee.com>

Copyright © Reserved

# Telephone Ring Initiated Beacons

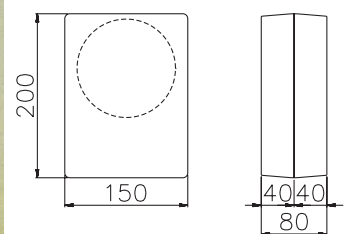
## TXL Xenon Strobe



Supply voltage	230Vac
Supply voltage limits	± 15%
Supply current	80mA
Luminous intensity	Red 115Cd
	Amber 264Cd
	Green 264Cd
	Blue 88Cd
	Clear 440Cd
Flash Energy	11J
Temperature limits	-40C, +55C
IEC protection class	IP65

Example Order Code: **TXL/AC/230/TRO/Amber**

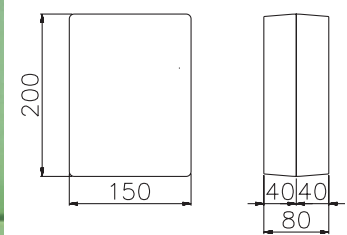
## TXN Xenon Strobe



Supply voltage	230Vac
Supply voltage limits	± 15%
Supply current	30mA
Luminous intensity	Red 192Cd
	Amber 576Cd
	Green 576Cd
	Blue 192Cd
	Clear 960Cd
Flash Energy	2.5J
Temperature limits	-40C, +55C
IEC protection class	IP65

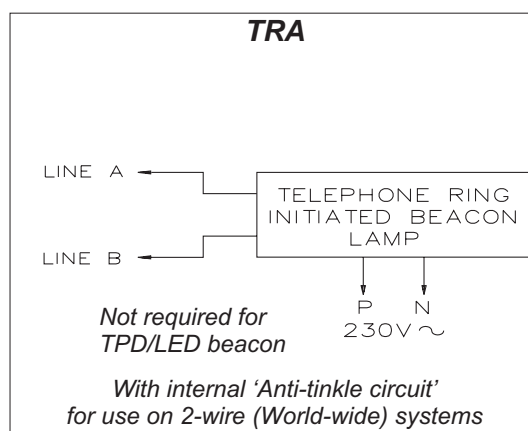
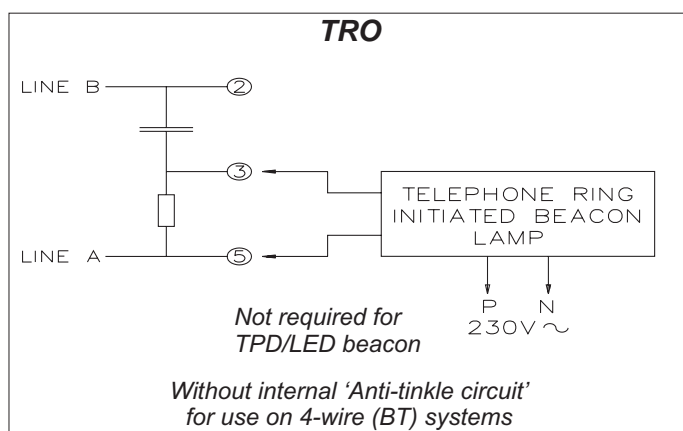
Example Order Code: **TXN/AC/230/TRO/Blue**

## IPN/LED/008 - Telephone Ring Initiated Flashing Indicator



Supply voltage	24Vdc	115Vac	230Vac
Supply current	180mA	60mA	30mA
Supply tolerance		± 15%	
Flash/min		40, 120fpm	
Luminous intensity		180Cd	
Temperature limits		-40C, +55C	
Environmental protection class		IP65	

Example Order Code: **IPN/AC/230//TROLED/008/Amber**



For Installation Accessories please refer to page 73

**D.G. Controls Limited**

Cadley Hill Road, Swadlincote, Derbyshire, DE11 9TB, ENGLAND.

Tel: +44 (0) 1283 550850 Fax: +44 (0) 1283 550776 E-mail: [sales@deegee.com](mailto:sales@deegee.com) www: <http://www.deegee.com>

Copyright © Reserved